



## WA 06-165/T Metal-EN54 STR

- All-metal construction
- Vandal-proof
- LED strobe flashlight



EN 54-24:2008  
**Ref. Nr.:** 007-13  
**ID-Code:** SAA-LS07  
1438-CPR-0231

ic audio GmbH, Boehringerstraße 14a,  
D-68307 Mannheim, Germany

CE-Symbol gemäß Richtlinie 93/68EWG

This speaker is the best choice for sensitive installations like prisons or industrial areas where plastic and wooden materials are not an option.

The 6W powered speaker is equipped with a 165mm full-range loudspeaker chassis and a 100V transformer with 3 power adjustments. In addition, the loudspeaker has a LED strobe flashlight that, in a new version with 14 candela, delivers almost 3 times brightness. This very high-performance white LED provides 1.400 lux at a distance of 100mm and a flashing frequency of 75 flashes per minute. With 18 lumens of light and a wide beam angle (75°), the strobe flashlight provides bright and uniform area illumination. Operating voltage of the flashing light 24 VDC, current consumption max.: 9 mA.

The extremely stable metal housing in RAL 9010 with corrosion-resistant powder coating, offers tremendous resilience paired with an unobtrusive design.

A 2 pin-ceramic block and a thermal fuse provide additional reliability. The speaker chassis is impregnated against wetness.

The speaker is secured with protection class IP 21C against the risks of environmental influences.

The speaker is also compliant with the British Standard BS 5839, Part 8.

Quick and easy screw mounting.

### Technical Data (Electrical)

Description	WA 06-165/T Metal-EN54 STR
Power	6/3/1,5 W
Impedance (100V)	1667/ 3333/6667 ohm
Frequency Range	170 - 18.500 Hz
Frequency Response	70 - 23.500 Hz
SPL IEC268-5 , 1W/1m	94,0 dB
SPL EN54-24, Pmax/4m	90,0 dB
Light intensity	14 cd
Sensitivity EN54-24, 1W/4m	82,0 dB
Dispersion -6dB, 500Hz	h=180° v=180°
Dispersion -6dB, 1KHz	h=160° v=160°
Dispersion -6dB, 2KHz	h=120° v=120°
Dispersion -6dB, 4KHz	h=76° v=76°

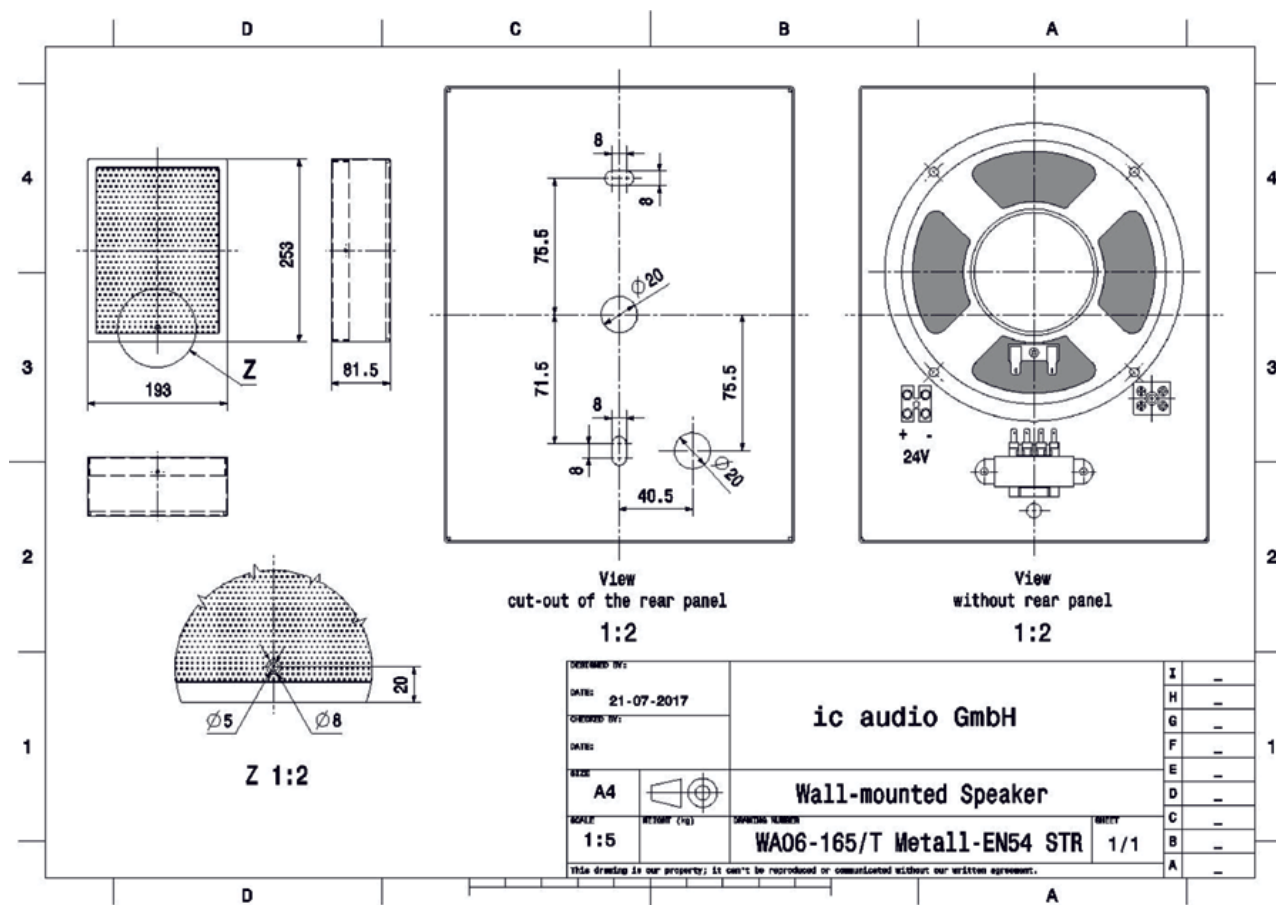
### Technical Data (Mechanical)

Dimensions	252x192x82 mm
IP Rating	IP21
Weight (net)	2,1 kg
Temperature range	-10 / +55 C°
Mounting	Screws
Connector	2-pin ceramic block
Terminal diameter	3,2 mm
Maximum cable cross section	8mm <sup>2</sup>
Colour	RAL 9010

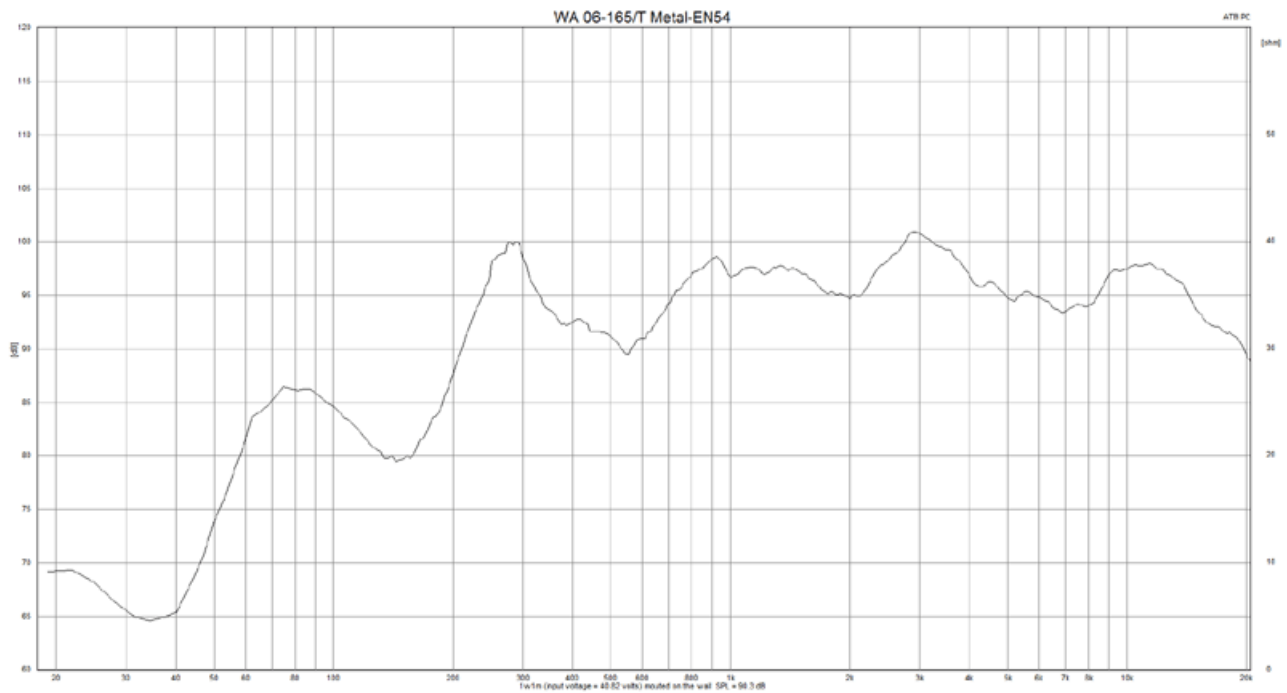
### Product Attributes



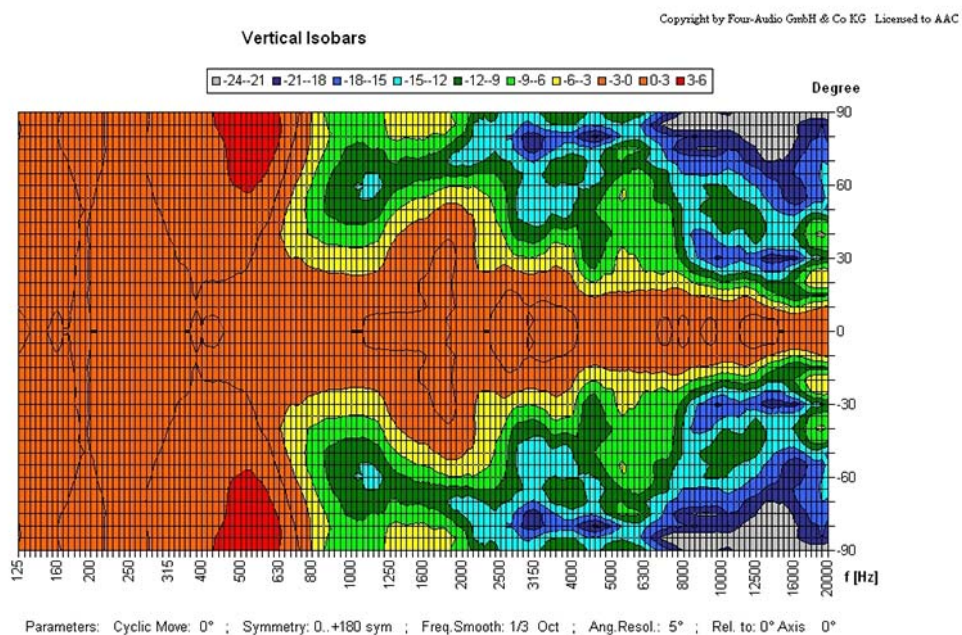
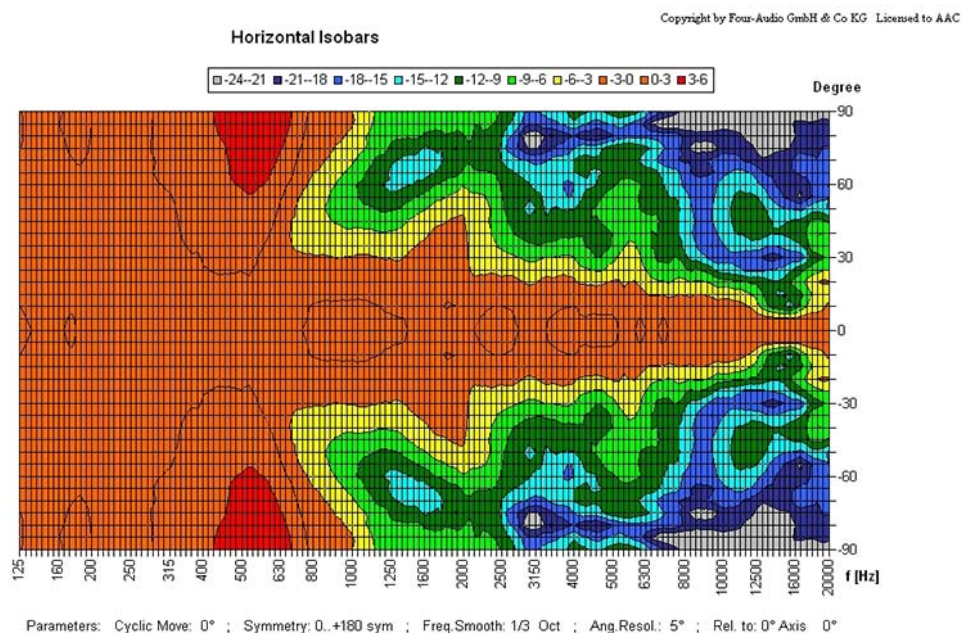
## Technical Diagrams



## Frequency Response Diagrams



## Polar Diagrams



ic audio loudspeakers are tested and classified according to the IEC standard 60529 (degree of protection by enclosure) against the penetration of foreign objects and moisture. The classification is conforming to standards through characterization with a fixed code. This code consists of the letters IP (International Protection) followed by two digits. The first digit indicates the degree of protection against dust and the second digit the degree of protection against water. Please note that the testing of the products has been carried out in laboratory conditions which are not always 100% comparable with the conditions of different installation environments. This protection can be reduced due to normal wear and tear depending on the installation environment.

RoHS compliant (2011/65/EU)

The IP rating specified is based on ic audio test results, not on CNBOP-PIB test results. Certification only verifies the minimum requirements for EN54-24 compliance.



**Article Nr.:** 20173280

**Packing Unit:** 8

