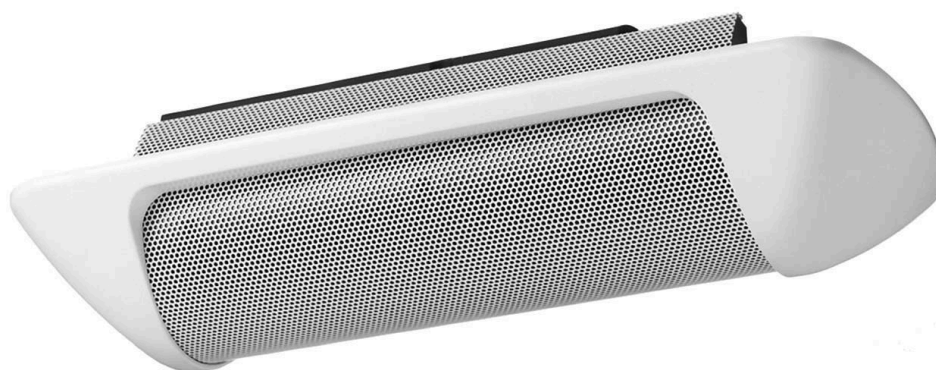


The H-1 is a cylinder-shaped, small flush-mount 2-way speaker that ensures quality sound reproduction. The mounting angle for its enclosure can be adjusted for up to 90 degrees.



Article number: H-1 EU
Alternative products: H-1, H-2, H-2WP

Specifications

Sensitivity (1#V, 1#m)	85 dB at installation in 1/2 free sound field
Frequency response	120 Hz - 20 kHz
Rated input (high impedance)	12 W
Tappings	100 V : 830 Ω (12 W) / 1.7 k Ω (6 W) / 3.3 k Ω (3 W) 70 V : 420 Ω (12 W) / 830 Ω (6 W) / 1.7 k Ω (3 W) / 3.3 k Ω (1.5 W)
Rated input (low impedance)	90 W (continuous program, 4 Ohm), 30 W (continuous pink noise, 4 Ohm)
Rated impedance	4 Ω , 16 Ω
Speaker component	8 x 5 cm cone woofer (neodymium magnet); 2.5 cm balanced dome tweeter
Finish	ABS resin, paint, signal white (RAL 9003 or equivalent),

Appearance

