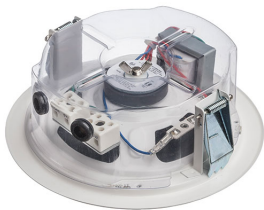




DL-E 06-130/T-EN54 safe

- high sound pressure level
- low mounting depth
- with optional fire dome BS 5839 compliant



EN 54-24:2008
Ref. Nr.: 012-13
ID-Code: SAA-LS12
1438-CPR-0347

ic audio GmbH, Boehringerstraße 14a,
D-68307 Mannheim, Germany

CE-Symbol gemäß Richtlinie 93/68EWG

The 6W powered speaker is equipped with a 130mm full-range loudspeaker and a 100V transformer with 3 power adjustments. The powder-coated metal similar to RAL 9016 guarantees long-term stability.

Thanks to an innovative airflow system, the DL-E provides sound characteristics which are attributed to a conventional bass speaker. An extremely flat construction method allows a low mounting depth of only 70mm, with less than 1 kg product weight. For additional safety, a 4 pin-ceramic block and a thermal fuse are provided and the speaker is impregnated against dampness. Protection class IP 21C secures the speaker against the impact of environmental influences.

Quick and easy mounting with spring clamps and short tension distance. Perfectly suitable for installations where the installation depth is very limited. In combination with the fire dome FE-130-EN54, the speaker is compliant with the British Standard BS 5839, Part 8. Special paint of the speaker in 4-digit RAL- or NCS-colour is available at extra cost. The innovative PET-plastic contact protection is included in the delivery and protected by a European patent (publication no. **2768238**).

This speaker is suitable for a ceiling strength of about 3-45 mm. Our specification is primarily related to solid ceilings, for ceilings with soft materials higher ceiling thicknesses could be necessary. In addition, stronger cables and other fittings may also result in changes in the appropriate setup. With regard to the variety of materials and manufacturers, we recommend building a sample of the speaker to match the requirements accurately.

Technical Data (Electrical)

Description	DL-E 06-130/T-EN54 safe
Power	6/3/1,5 W
Impedance (100V)	1667/3333/6667 ohm
Frequency Range	104 - 17.200 Hz
Frequency Response	57 - 24.000 Hz
SPL IEC268-5 , 1W/1m	87,0 dB (plastic) 86,0 dB (metal)
SPL EN54-24, Pmax/4m	85,0 dB
Sensitivity EN54-24, 1W/4m	74,8 dB (plastic) 74,2 dB (metal)
Sensitivity EN54-24, 1W/1m	86,8 dB
Dispersion -6dB, 500Hz	180°
Dispersion -6dB, 1KHz	180°
Dispersion -6dB, 2KHz	140°
Dispersion -6dB, 4KHz	85°

Please note: Because of many different types of ceiling materials and ceiling strengths we recommend to build in a sample of the speaker to match the requirements accurately.

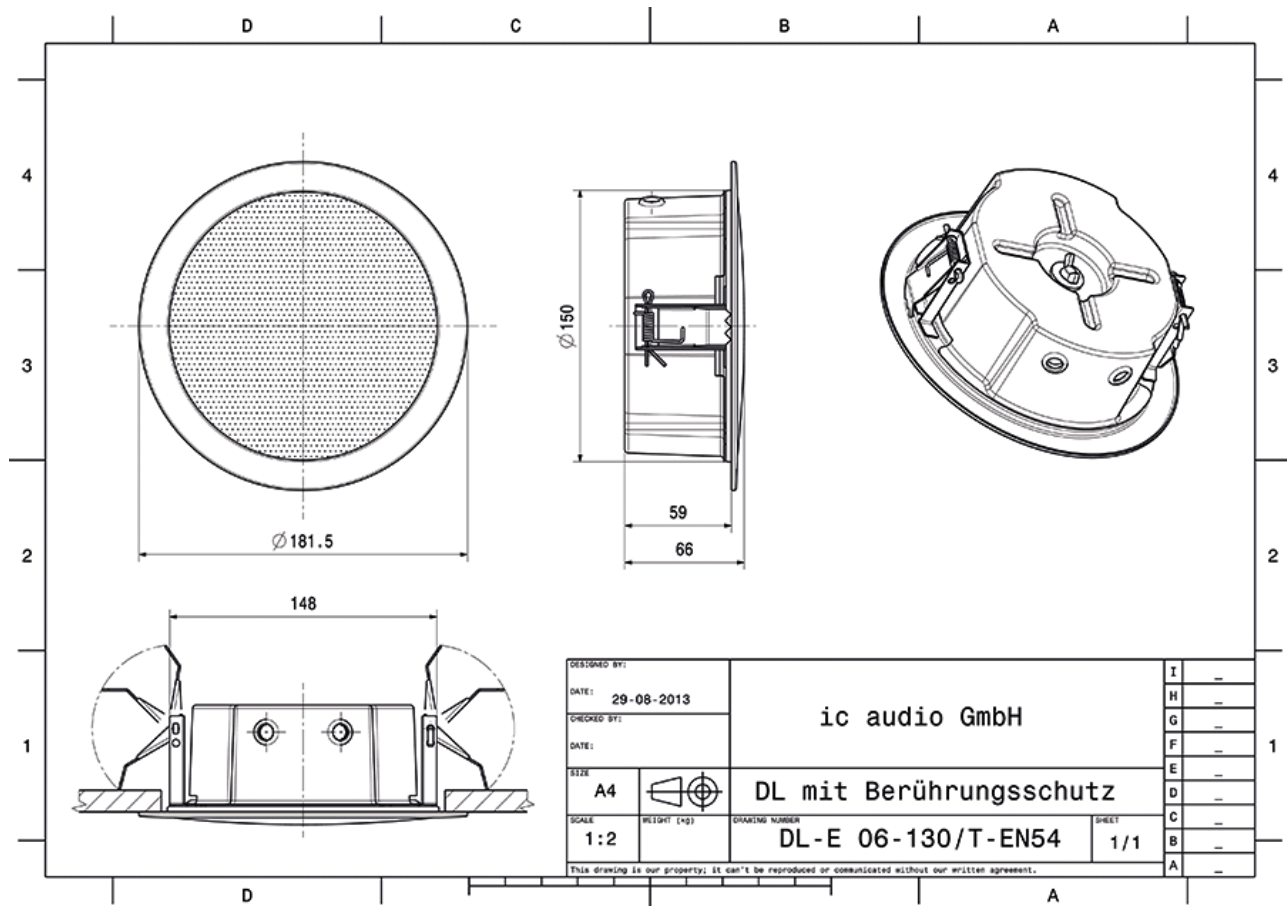
Technical Data (Mechanical)

Dimensions	181,5x66 mm
IP Rating	IP21
Weight (net)	0,51 kg
Ceiling Cut-out	156 mm
Temperature range	-10 / + 55 °C
Mounting	spring clamp
Connector	4-pin ceramic block
Terminal diameter	3,2 mm
Maximum cable cross section	8mm ²
Colour	RAL 9016

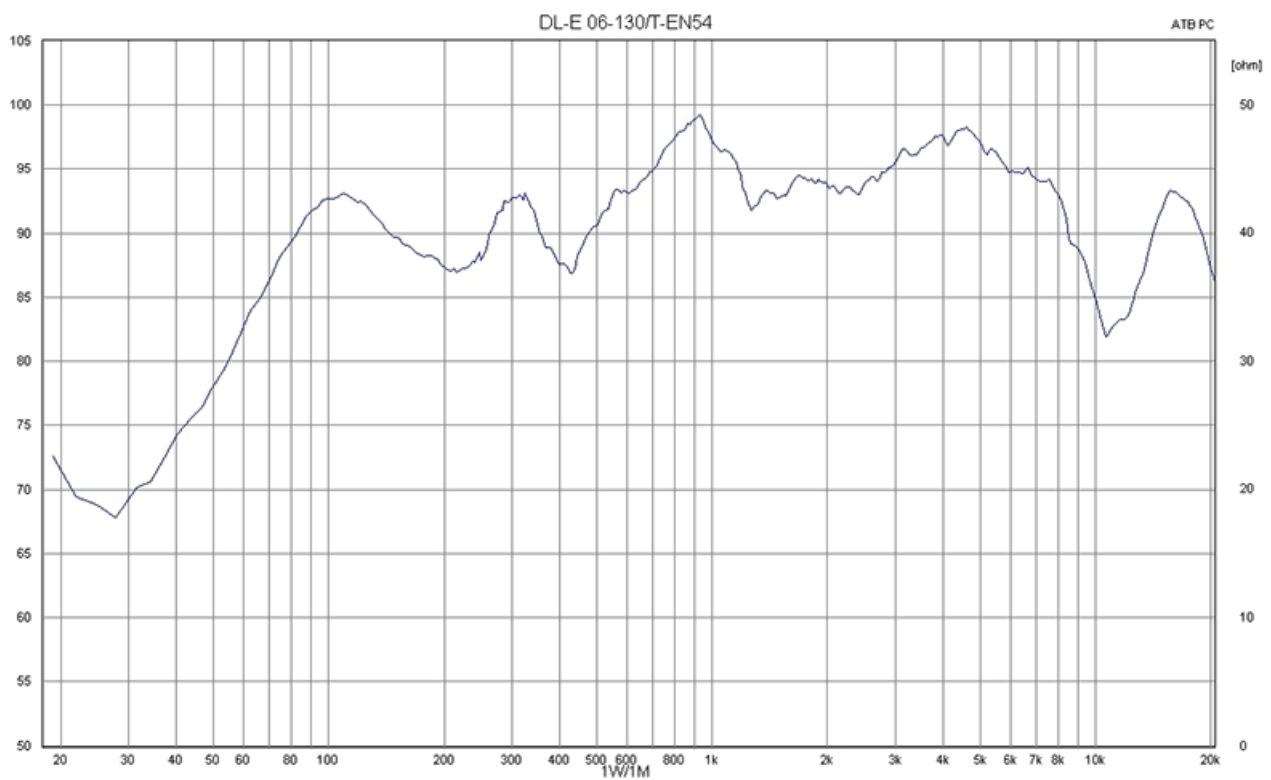
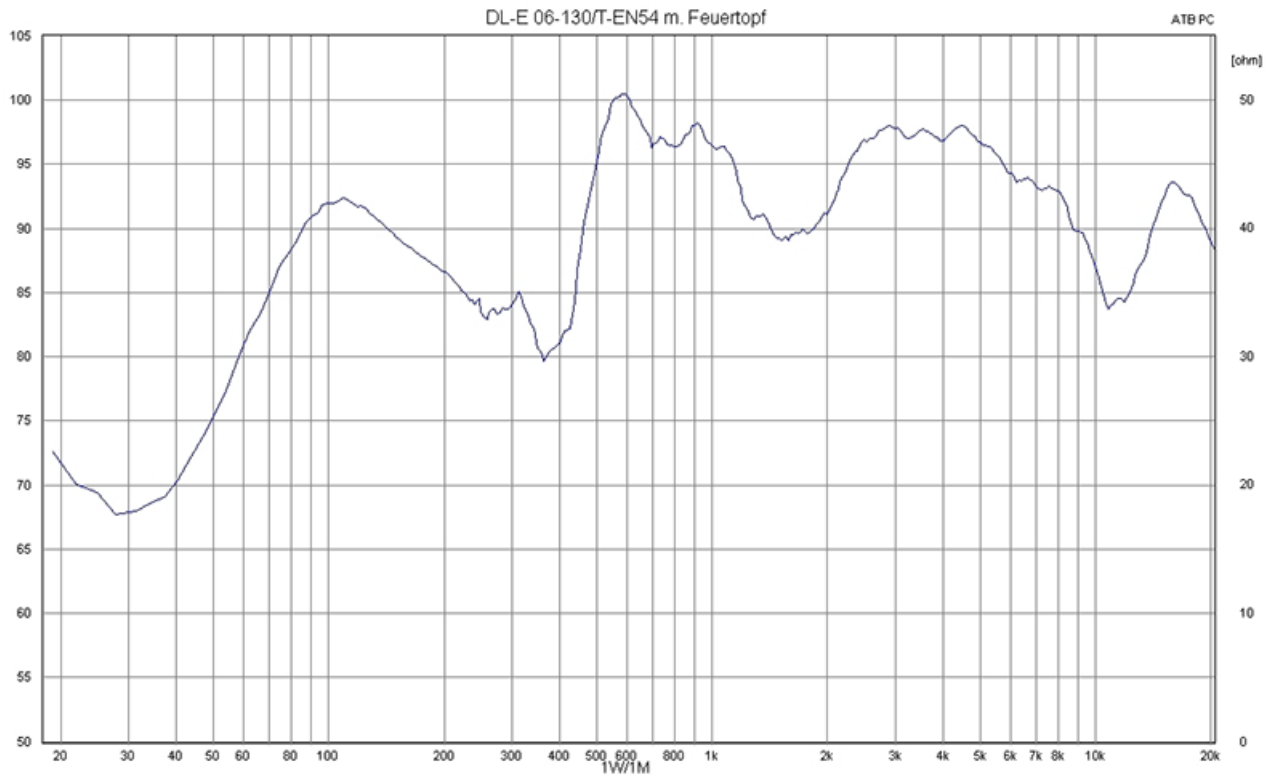
Product Attributes



Technical Diagrams

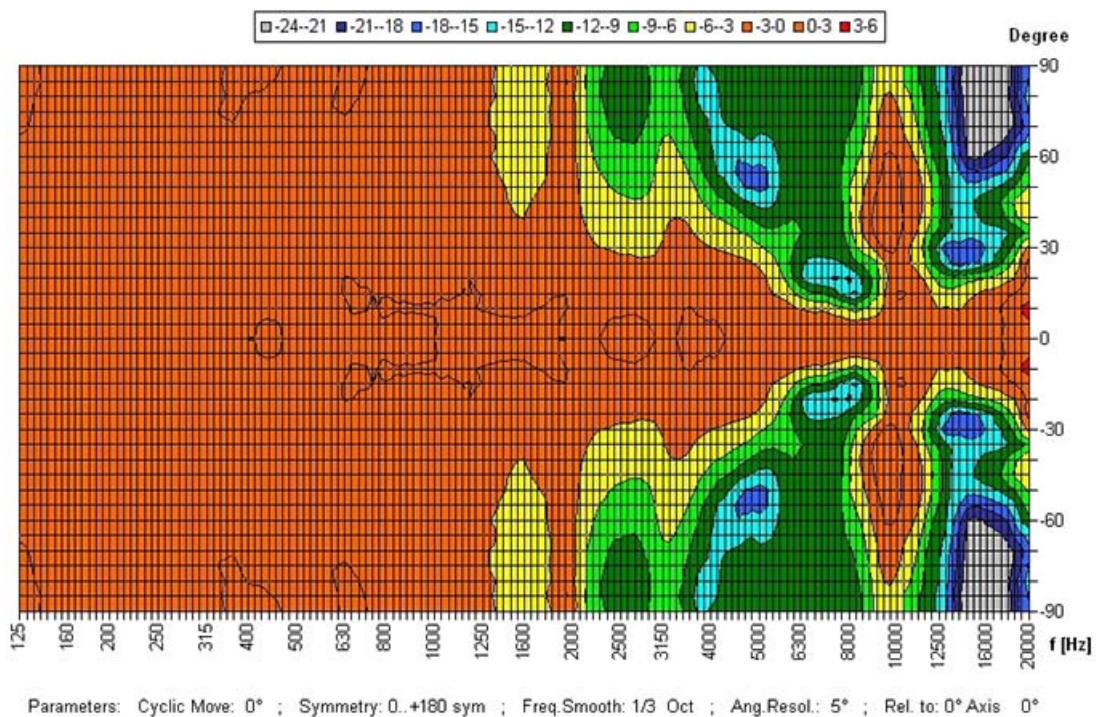
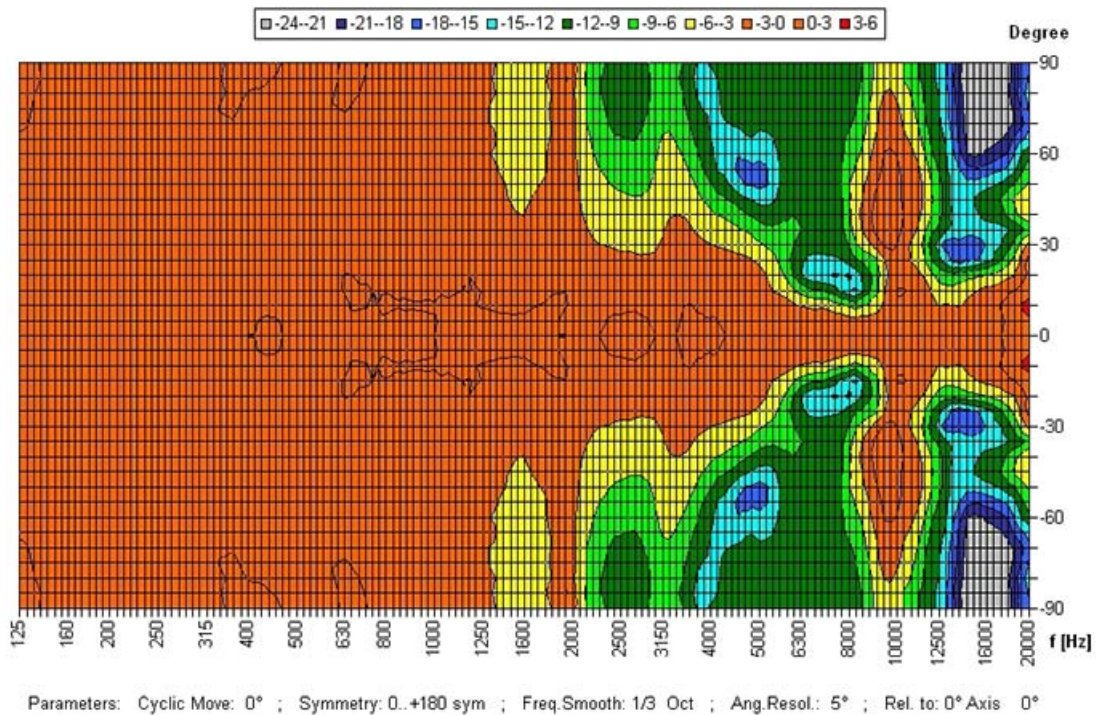


Frequency Response Diagrams



Polar Diagrams

Copyright by Four-Audio GmbH & Co KG Licensed to AAC



ic audio loudspeakers are tested and classified according to the IEC standard 60529 (degree of protection by enclosure) against the penetration of foreign objects and moisture. The classification is conforming to standards through characterization with a fixed code. This code consists of the letters IP (International Protection) followed by two digits. The first digit indicates the degree of protection against dust and the second digit the degree of protection against water. Please note that the testing of the products has been carried out in laboratory conditions which are not always 100% comparable with the conditions of different installation environments. This protection can be reduced due to normal wear and tear depending on the installation environment.

RoHS compliant (2011/65/EU)

The IP rating specified is based on ic audio test results, not on CNBOP-PIB test results. Certification only verifies the minimum requirements for EN54-24 compliance.



Article Nr.: 20132652S

Packing Unit: 12

