

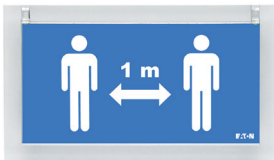
# Physical distance signaling device with LED backlit



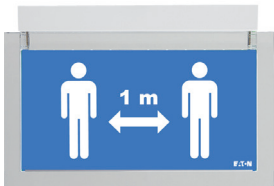
## Physical distance signaling device with LED backlit

- Exclusive safety physical distance signaling device with backlit LED technology
- Concise design with highly transparent frame and replaceable inner screen-printed pictograms
- Includes a set of pictograms with 1m and 2m indications
- Only one order number for wall or ceiling mounting
- Comprehensive solution with various accessories available like recessed kit and wire suspension
- Elegant, thin & slim electronic base (Height: only 22mm)
- Optimal recognition via high luminance of white contrast colour > 500 cd/m<sup>2</sup> and high uniformity L<sub>min</sub>/L<sub>max</sub> > 0.8
- Low operating costs due to the low effective power of 1.8W only

Wall-surface mounting



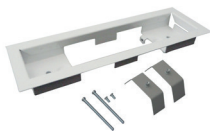
Ceiling-surface mounting



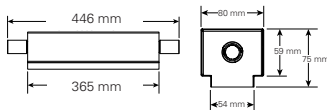
Wire suspension kit



Recessed base



Concrete box



2m distance pictogram included (as well as 1m variant)




Viewing distance	30 m
Housing material	Polycarbonat
Housing colour	RAL 9003
Weight	0.7 kg
Type of mounting	Wall and ceiling mounting
Connection terminals	2 x 3 x 2.5 mm <sup>2</sup>
Connection voltage	230 V AC, 50 Hz 220 V DC
Power consumption mains operation (apparent power/effective power)	3 VA / 1.8 W
Permissible ambient temperature	5 °C to +35 °C
Light source	LED strip

## Ordering details

Type	Scope of supply	Order-No.
Physical distance signaling device	including 2 x 1m and 2 x 2m pictograms	LUM22217-SDS

## Accessories

Product	Order-No.
Signage plate suspension kit	LUM10560
Mounting frame 	LUM10562
Mounting frame with surround	LUM10564
Recess mounting box	LUM10566