

# Product datasheet

Specifications



Load-shedder, Schneider Charge, 3P, maximum current allowed to charging station automatically set up to 50A

EVA2HPC3

## Main

Range	Schneider Charge
Product or component type	Load-shedder
Material	Plastic

## Complementary

Range compatibility	Schneider Charge Pro
Condition of use	Indoor
Mounting support	35 mm DIN rail
Setting of maximum current provided to charging station	Automatic
Possible maximum current provided to charging station	50 A
[Us] rated supply voltage	220...230 V AC 50/60 Hz +/- 10 %
Power consumption in W	5 W
connectivity to devices	PLC
Local signalling	1 green LED, function: control process 1 red LED, function: fault indication 1 green LED, function: embedded communication status
Standards	EN 61010-1:2010 EN 61326-1:2013
Quantity per set	Set of 1
Height	72 mm
Width	89 mm
Depth	75 mm
Net weight	180 g
Colour	White

## Environment

Operating altitude	0...2000 m
Ambient air temperature for operation	-30...50 °C
Ambient air temperature for storage	-40...85 °C
Relative humidity	5...95 %
Overvoltage category	III
Pollution degree	2

Disclaimer: This documentation is not intended as a substitute for and is not to be used for determining suitability or reliability of these products for specific user applications

# Packing Units

Unit Type of Package 1	PCE
Number of Units in Package 1	1
Package 1 Height	9.800 cm
Package 1 Width	12.000 cm
Package 1 Length	22.000 cm
Package 1 Weight	618.000 g
Unit Type of Package 2	S04
Number of Units in Package 2	12
Package 2 Height	30.000 cm
Package 2 Width	40.000 cm
Package 2 Length	60.000 cm
Package 2 Weight	9.184 kg
Unit Type of Package 3	P12
Number of Units in Package 3	96
Package 3 Height	73.000 cm
Package 3 Width	80.000 cm
Package 3 Length	120.000 cm
Package 3 Weight	88.000 kg

Schneider Electric aims to achieve Net Zero status by 2050 through supply chain partnerships, lower impact materials, and circularity via our ongoing “Use Better, Use Longer, Use Again” campaign to extend product lifetimes and recyclability.

[Environmental Data explained >](#)


[How we assess product sustainability >](#)

Environmental footprint	
Environmental Disclosure	<a href="#">Product Environmental Profile</a>

Use Better

Materials and Substances	
Packaging made with recycled cardboard	No
Packaging without single use plastic	No
<a href="#">EU RoHS Directive</a>	Compliant with Exemptions
SCIP Number	35f25d1c-ed42-419a-bab0-354f2d8eb602
REACH Regulation	<a href="#">REACH Declaration</a>

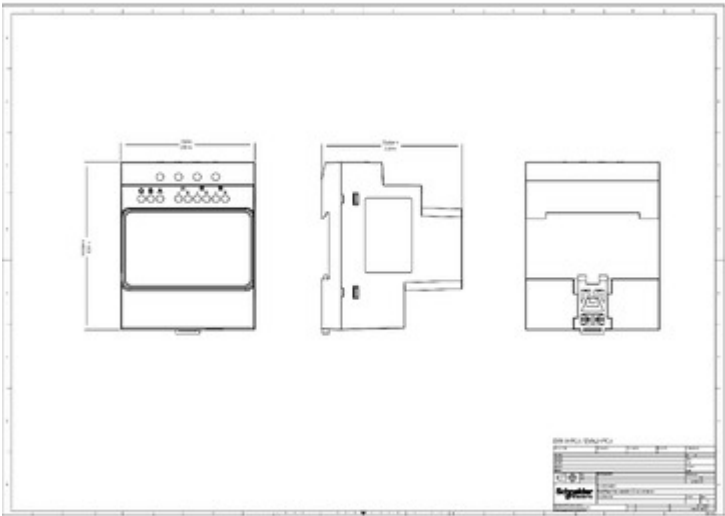
Use Again

Repack and remanufacture	
End of life manual availability	<a href="#">End of Life Information</a>
WEEE Label	 The product must be disposed on European Union markets following specific waste collection and never end up in rubbish bins

Technical Illustration

Dimensions

---



Offer Marketing Illustration

Product benefits / Features

---



Aesthetic, functional  
and robust home EV  
charging solution.



Smart homes,  
smarter EV charging.  
Remote control with  
the Wiser app.



Easy installation  
in minutes.