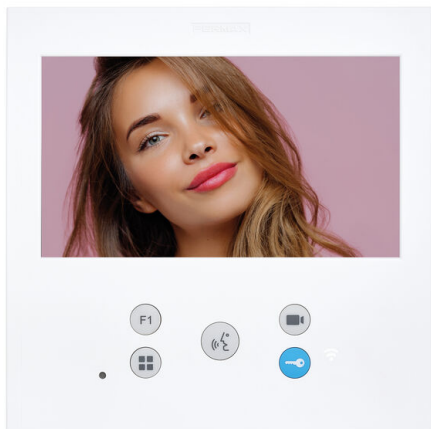


Product Code

F09469

## DUOX PLUS VEO-XL WIFI 7" MONITOR



Reference

9469

EAN

8424299094694

### Description.

---

#### Description

VEO-XL WIFI is equipped **with Wi-Fi connection that allows call forwarding to mobile devices** . Thanks to the Fermax DuoxMe application, available for free on the Play Store and App Store, the video intercom functions can be managed directly from a mobile phone or tablet, to connect to your home, wherever you are.

VEO-XL hands-free monitor. It is characterized by its thickness, extra-flat. Thanks to its OSD menu and the layout of the buttons, its interaction with the user is simple and intuitive. Made of high impact ABS plastic. Textured finish for easy cleaning and UV protection to make it more resistant to sunlight.

VEO-XL includes a 7" wide color screen (16:9). Its balanced design with clean lines is distinctive, modern and minimalist. VEO-XL blends into the environment. When a call is received, the image appears automatically . When the conversation button is pressed, the conversation with the visitor begins. The image automatically disappears after 90 seconds or when the button is pressed again. To open the door, press the key button.

#### ACCESSORIES:

#### CONNECTOR

- 9447 DUOX PLUS MONITOR CONNECTOR

- For mounting the monitor on the wall surface.

## REPLACEMENT

- 3389 LARGE UNIVERSAL FRAME 210x240
- Extra flat format, made of high-impact ABS plastic, it has a fine textured finish. In replacement, it allows to fill the gap left by previous teams.
- Dimensions: 210 x 240 x 10mm

## Technical Details

### GENERAL CHARACTERISTICS

- Technology: DUOX PLUS (non-polarised 2 wire full digital system)
- Audio/Video system: Audio/Video Color
- Set-up (Installation): Surface mounted (order connector ref. 9447 separately)
- Desktop support: Yes (ref. 9420)
- Hands-free communication: Yes
- Press-to-talk communication configurable: Yes
- Induction loop: No (order monitor ref. 9479 with induction loop)
- Screen dimensions: 7" (Panoramic 16:9)
- Screen resolution (H x V): 800 x 480
- Color of the product: Matt white
- Number of pushbuttons: 5
- Kind of pushbuttons: Mechanical (silicone)
- Number of leds for lighted indications: 3 (red, blue, green with different states)

### PROGRAMMING OF THE TERMINAL ADDRESS

- From the terminal: From the OSD menu
- From the outdoor panel or guard unit: Yes
- From the outdoor panel throughout the apartment door bell: Yes

### FEATURES

- Automatic picture capture when the visitor calls (PHOTOCALLER): Yes (1 photo/call, until 150 photos, 368 x 288 pixels). This feature can be enabled by the user. Disabled by default.
- Guard unit call: Yes (by means of the door release button)
- Auto-on: Yes (with 3 outdoor panels/cameras)
- OSD menu: Yes
- Additional function F1: Yes (Button F1 sends a negative and/or command)
- Additional function F2: Yes (it only sends command, no negative)

- Apartment door bell differentiated from the outdoor panel: Yes
- Connection for additional devices (call extension, light/buzzer activator, etc.): Yes (ref. 2040, ref. 2438, ref. 3267)
- Additional terminals on the same address: Yes, max. 2 additional terminals (additional power supply can be required)
- Doormatic (automatic door release for offices, etc.): Yes (configurable until 12h). Green Led ON.

## ADJUSTMENTS

- Date and time: Yes
- Ring tones selection: Yes (5). Configurable for Block Panel 0, Block Panel 1, General Entrance Panel 0 and Concierge unit.
- Call volume control: Yes (10 levels by OSD menu)
- Do-not-disturb mode: Yes (by OSD menu) + Red led indication
- Audio volume control: Yes (10 levels by OSD menu)
- Brightness, color and contrast control: Yes (by OSD menu)

## TECHNICAL FEATURES

- Product dimensions (width x height x depth) mm: 185 x 185 x 24.5
- Time to answer or open the door since the call is done: 30 s.
- Conversation time: 90 s.
- Conversation privacy: Yes
- Voltage: 18-24 Vdc
- Maximum consumption: 6.48 W
- Standby consumption (paired and connected): 1.5 W
- Working temperature (°C, °F); Humidity: [-5°C, +40°C][23°F, 104°F]; [0%, 90%]
- Line adaptor included in the terminal: Yes (A, C, default position OFF)
- Connections: Bin, Bin, Bout, Bout, -, A+, F1, T

## CALL FORWARDING (APP "DuoxMe" FOR SMARTPHONES & TABLETS)

- Call forwarding to smartphones and tablets: Yes
- Connectivity: Wifi (2,4 Ghz)

## Details.

Product measurements (height x width x depth) mm	Weight (kg)	Packaging measurements (height x width x depth) cm	Video Door Entry system Technologie
185 x 185 x 24.5	0.4876	19x4,3x19	DUOX

## Manuals

- 970193Ag Monitor VEO XL Wifi DUOX Plus V12\_24.pdf
- 970193Eg Monitor VEO XL WiFi DUOX Plus V12\_24.pdf
- 970193Eld Monitor VEO XL WiFi DUOX Plus V10\_23.pdf
- 970193FAd Monitor VEO XL WiFi DUOX Plus V10\_23.pdf
- 970193Fg Monitor VEO XL WiFi DUOX Plus V12\_24.pdf
- 970193Ig Monitor VEO XL WiFi DUOX Plus V12\_24.pdf
- 970193Pd Monitor VEO XL WiFi DUOX Plus V10\_23.pdf
- 970193Pg Monitor VEO XL WiFi DUOX Plus V12\_24.pdf
- 970193Yg Monitor VEO XL WiFi DUOX Plus V05\_25.pdf
- [https://d7rh5s3nxdmp4.cloudfront.net/CMP2008/files/970194d%20Guia%20rap%20monitor%20VEO%20XL%20WiFi%20DUOX%20Plus%20V05\\_25.pdf](https://d7rh5s3nxdmp4.cloudfront.net/CMP2008/files/970194d%20Guia%20rap%20monitor%20VEO%20XL%20WiFi%20DUOX%20Plus%20V05_25.pdf), ,

## Declaration of conformity

- DOCF09469EN-FCC.pdf

## Accessories



F09447  
DUOX PLUS CONNECTOR



F02040  
ELECTRONIC EXTENSION CALL



F03389  
UNIVERSAL FRAME LARGE



F09420  
VEO-XS/VEO-XL MONITOR DESKTOP  
SUPPORT

## Side view



## Back view



#### Video

- [https://www.youtube.com/playlist?list=PLf1YNFmssC370gCuNtmOfi\\_EXSr-0D5JM](https://www.youtube.com/playlist?list=PLf1YNFmssC370gCuNtmOfi_EXSr-0D5JM)

#### Training video

- <https://youtube.com/playlist?list=PLf1YNFmssC37H-1CN64lo6ND28rmVsQit>